

PrettyThingsByKatja

BABY LOSS RIBBON C2C BLANKET PATTERN

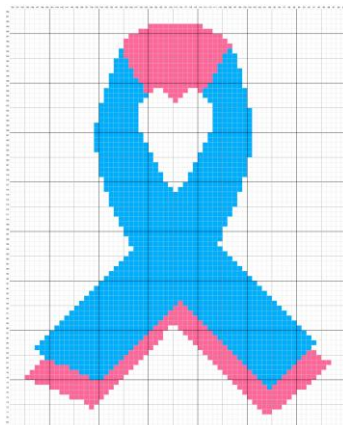


bestofcrochetpatterns.com



Baby Loss Ribbon - C2C Crochet Blanket Pattern - PrettyThingsByKatja

Baby Loss Ribbon – C2C Crochet Blanket Pattern



Thank you for choosing my pattern! I ask that you kindly do not copy, share, alter, or sell my pattern.

This pattern is for your personal use only.

You are more than welcome to sell items made from PrettyThingsByKatja; credit to the designer is greatly appreciated.

• www.etsy.com/shop/PrettyThingsByKatja •

Tag your finished projects on Instagram or Facebook.

If you have any questions about this pattern, I am glad to help.

Katja@bestofcrochetpatterns.com

You can also contact me on Instagram, Facebook or Etsy.

You can follow me on:



www.facebook.com/PrettyThingsByKatja/



https://www.instagram.com/pretty_things_by_katja/



<https://bestofcrochetpatterns.com/>

(I share free patterns and crochet tips there)



<https://www.pinterest.com/KatjaCrochetPatterns/>



Baby Loss Ribbon - C2C Crochet Blanket Pattern - PrettyThingsByKatja

Supplies:

- 3.00mm Crochet Hook
- #3 DK/Light Worsted Yarn in three colors – You can use different types of yarn, just adjust the size of the hook.
- Yarn Needle
- Scissors and Tape (for Graph Assembly)

Abbreviations:

- CH ~ Chain
- SC ~ Single Crochet
- SL ST ~ Slip Stitch
- RS ~ Right Side
- WS ~ Wrong Side
- MC ~ Main Color
- CC ~ Contrast Color
- ST(S) ~ Stitch(es)
- FO ~ Finish Off

You can calculate the approximate yardage needed from the number of squares:

- White ~ 3676
- Pink ~ 550
- Baby Blue ~ 1554



Written instructions:

- ← Row 1 [RS]: White
- Row 2 [WS]: (White) x 2
- ← Row 3 [RS]: (White) x 3
- Row 4 [WS]: (White) x 4
- ← Row 5 [RS]: (White) x 5
- Row 6 [WS]: (White) x 6
- ← Row 7 [RS]: (White) x 7
- Row 8 [WS]: (White) x 8
- ← Row 9 [RS]: (White) x 9
- Row 10 [WS]: (White) x 10
- ← Row 11 [RS]: (White) x 11
- Row 12 [WS]: (White) x 12
- ← Row 13 [RS]: (White) x 13
- Row 14 [WS]: (White) x 14
- ← Row 15 [RS]: (White) x 15
- Row 16 [WS]: (White) x 16
- ← Row 17 [RS]: (White) x 3, (Pink) x 6, (White) x 8
- Row 18 [WS]: (White) x 4, (Pink) x 10, (White) x 4
- ← Row 19 [RS]: (White) x 5, (Pink) x 11, (White) x 3
- Row 20 [WS]: (White) x 3, (Pink) x 12, (White) x 5
- ← Row 21 [RS]: (White) x 6, (Pink) x 11, (White) x 4
- Row 22 [WS]: (White) x 4, (Pink) x 12, (White) x 6
- ← Row 23 [RS]: (White) x 7, (Pink) x 11, (White) x 5
- Row 24 [WS]: (White) x 5, (Pink) x 3, (Baby Blue) x 10, (White) x 6
- ← Row 25 [RS]: (White) x 7, (Baby Blue) x 9, (Pink) x 3, (White) x 6
- Row 26 [WS]: (White) x 6, (Pink) x 3, (Baby Blue) x 10, (White) x 7
- ← Row 27 [RS]: (White) x 8, (Baby Blue) x 9, (Pink) x 3, (White) x 7
- Row 28 [WS]: (White) x 7, (Pink) x 3, (Baby Blue) x 10, (White) x 8



Baby Loss Ribbon - C2C Crochet Blanket Pattern - PrettyThingsByKatja

- ← Row 29 [RS]: (White) x 9, (Baby Blue) x 9, (Pink) x 3, (White) x 8
- Row 30 [WS]: (White) x 8, (Pink) x 3, (Baby Blue) x 10, (White) x 9
- ← Row 31 [RS]: (White) x 10, (Baby Blue) x 9, (Pink) x 3, (White) x 9
- Row 32 [WS]: (White) x 9, (Pink) x 3, (Baby Blue) x 10, (White) x 10
- ← Row 33 [RS]: (White) x 11, (Baby Blue) x 9, (Pink) x 3, (White) x 10
- Row 34 [WS]: (White) x 10, (Pink) x 3, (Baby Blue) x 10, (White) x 11
- ← Row 35 [RS]: (White) x 12, (Baby Blue) x 9, (Pink) x 3, (White) x 11
- Row 36 [WS]: (White) x 11, (Pink) x 3, (Baby Blue) x 10, (White) x 12
- ← Row 37 [RS]: (White) x 13, (Baby Blue) x 9, (Pink) x 3, (White) x 12
- Row 38 [WS]: (White) x 12, (Pink) x 3, (Baby Blue) x 10, (White) x 13
- ← Row 39 [RS]: (White) x 14, (Baby Blue) x 9, (Pink) x 3, (White) x 13
- Row 40 [WS]: (White) x 13, (Pink) x 3, (Baby Blue) x 10, (White) x 14
- ← Row 41 [RS]: (White) x 15, (Baby Blue) x 9, (Pink) x 3, (White) x 14
- Row 42 [WS]: (White) x 14, (Pink) x 3, (Baby Blue) x 10, (White) x 15
- ← Row 43 [RS]: (White) x 16, (Baby Blue) x 9, (Pink) x 3, (White) x 15
- Row 44 [WS]: (White) x 15, (Pink) x 3, (Baby Blue) x 10, (White) x 16
- ← Row 45 [RS]: (White) x 17, (Baby Blue) x 9, (Pink) x 3, (White) x 16
- Row 46 [WS]: (White) x 16, (Pink) x 3, (Baby Blue) x 10, (White) x 17
- ← Row 47 [RS]: (White) x 18, (Baby Blue) x 9, (Pink) x 3, (White) x 17
- Row 48 [WS]: (White) x 17, (Pink) x 3, (Baby Blue) x 10, (White) x 18
- ← Row 49 [RS]: (White) x 19, (Baby Blue) x 9, (Pink) x 3, (White) x 18
- Row 50 [WS]: (White) x 18, (Pink) x 3, (Baby Blue) x 10, (White) x 19
- ← Row 51 [RS]: (White) x 20, (Baby Blue) x 9, (Pink) x 3, (White) x 19
- Row 52 [WS]: (White) x 19, (Pink) x 3, (Baby Blue) x 10, (White) x 20
- ← Row 53 [RS]: (White) x 21, (Baby Blue) x 9, (Pink) x 3, (White) x 20
- Row 54 [WS]: (White) x 20, (Pink) x 3, (Baby Blue) x 10, (White) x 21
- ← Row 55 [RS]: (White) x 22, (Baby Blue) x 9, (Pink) x 3, (White) x 21
- Row 56 [WS]: (White) x 4, (Pink) x 15, (White) x 2, (Pink) x 3, (Baby Blue) x 10, (White) x 22
- ← Row 57 [RS]: (White) x 23, (Baby Blue) x 9, (Pink) x 20, (White) x 5



Baby Loss Ribbon - C2C Crochet Blanket Pattern - PrettyThingsByKatja

→ Row 58 [WS]: (White) x 5, (Pink) x 20, (Baby Blue) x 10, (White) x 23

← Row 59 [RS]: (White) x 24, (Baby Blue) x 9, (Pink) x 20, (White) x 6

→ Row 60 [WS]: (White) x 6, (Pink) x 4, (Baby Blue) x 26, (White) x 24

← Row 61 [RS]: (White) x 25, (Baby Blue) x 26, (Pink) x 4, (White) x 6

→ Row 62 [WS]: (White) x 6, (Pink) x 4, (Baby Blue) x 27, (White) x 25

← Row 63 [RS]: (White) x 26, (Baby Blue) x 26, (Pink) x 4, (White) x 7

→ Row 64 [WS]: (White) x 7, (Pink) x 4, (Baby Blue) x 28, (White) x 25

← Row 65 [RS]: (White) x 25, (Baby Blue) x 29, (Pink) x 4, (White) x 7

→ Row 66 [WS]: (White) x 8, (Pink) x 4, (Baby Blue) x 30, (White) x 24

← Row 67 [RS]: (White) x 23, (Baby Blue) x 32, (Pink) x 4, (White) x 8

→ Row 68 [WS]: (White) x 8, (Pink) x 4, (Baby Blue) x 34, (White) x 22

Corner

← Row 69 [RS]: (White) x 22, (Baby Blue) x 34, (Pink) x 4, (White) x 8

→ Row 70 [WS]: (White) x 7, (Pink) x 4, (Baby Blue) x 36, (White) x 21

← Row 71 [RS]: (White) x 21, (Baby Blue) x 37, (Pink) x 4, (White) x 6

→ Row 72 [WS]: (White) x 5, (Pink) x 4, (Baby Blue) x 39, (White) x 20

← Row 73 [RS]: (White) x 20, (Baby Blue) x 39, (Pink) x 4, (White) x 5

→ Row 74 [WS]: (White) x 4, (Pink) x 4, (Baby Blue) x 40, (White) x 20

← Row 75 [RS]: (White) x 19, (Baby Blue) x 42, (Pink) x 4, (White) x 3

→ Row 76 [WS]: (White) x 7, (Baby Blue) x 42, (White) x 19

← Row 77 [RS]: (White) x 19, (Baby Blue) x 43, (White) x 6

→ Row 78 [WS]: (White) x 6, (Baby Blue) x 43, (White) x 19

← Row 79 [RS]: (White) x 19, (Baby Blue) x 44, (White) x 5

→ Row 80 [WS]: (White) x 25, (Baby Blue) x 24, (White) x 19

← Row 81 [RS]: (White) x 19, (Baby Blue) x 25, (White) x 24

→ Row 82 [WS]: (White) x 24, (Baby Blue) x 25, (White) x 19

← Row 83 [RS]: (White) x 19, (Baby Blue) x 13, (White) x 3, (Baby Blue) x 9, (White) x 24

→ Row 84 [WS]: (White) x 23, (Baby Blue) x 10, (White) x 4, (Baby Blue) x 12, (White) x 19

← Row 85 [RS]: (White) x 20, (Baby Blue) x 10, (White) x 6, (Baby Blue) x 9, (White) x 23



Baby Loss Ribbon - C2C Crochet Blanket Pattern - PrettyThingsByKatja

Corner

- Row 86 [WS]: (White) x 23, (Baby Blue) x 9, (White) x 7, (Baby Blue) x 9, (White) x 19
- ← Row 87 [RS]: (White) x 18, (Baby Blue) x 8, (White) x 9, (Baby Blue) x 9, (White) x 22
- Row 88 [WS]: (White) x 22, (Baby Blue) x 9, (White) x 10, (Baby Blue) x 7, (White) x 17
- ← Row 89 [RS]: (White) x 16, (Baby Blue) x 7, (White) x 10, (Baby Blue) x 9, (White) x 22
- Row 90 [WS]: (White) x 21, (Baby Blue) x 9, (White) x 11, (Baby Blue) x 6, (White) x 16
- ← Row 91 [RS]: (White) x 15, (Baby Blue) x 6, (White) x 11, (Baby Blue) x 9, (White) x 21
- Row 92 [WS]: (White) x 21, (Baby Blue) x 9, (White) x 11, (Baby Blue) x 6, (White) x 14
- ← Row 93 [RS]: (White) x 13, (Baby Blue) x 6, (White) x 12, (Baby Blue) x 9, (White) x 20
- Row 94 [WS]: (White) x 20, (Baby Blue) x 9, (White) x 11, (Baby Blue) x 7, (White) x 12
- ← Row 95 [RS]: (White) x 12, (Baby Blue) x 6, (White) x 11, (Baby Blue) x 9, (White) x 20
- Row 96 [WS]: (White) x 20, (Baby Blue) x 8, (White) x 11, (Baby Blue) x 7, (White) x 11
- ← Row 97 [RS]: (White) x 10, (Baby Blue) x 7, (White) x 11, (Baby Blue) x 9, (White) x 19
- Row 98 [WS]: (White) x 19, (Baby Blue) x 9, (White) x 10, (Pink) x 3, (Baby Blue) x 5, (White) x 9
- ← Row 99 [RS]: (White) x 9, (Baby Blue) x 3, (Pink) x 4, (White) x 11, (Baby Blue) x 8, (White) x 19
- Row 100 [WS]: (White) x 19, (Baby Blue) x 8, (White) x 10, (Pink) x 6, (Baby Blue) x 2, (White) x 8
- ← Row 101 [RS]: (White) x 7, (Pink) x 12, (White) x 6, (Baby Blue) x 9, (White) x 18
- Row 102 [WS]: (White) x 18, (Baby Blue) x 8, (White) x 7, (Pink) x 11, (White) x 7
- ← Row 103 [RS]: (White) x 6, (Pink) x 12, (White) x 6, (Baby Blue) x 8, (White) x 18
- Row 104 [WS]: (White) x 18, (Baby Blue) x 8, (White) x 6, (Pink) x 11, (White) x 6
- ← Row 105 [RS]: (White) x 5, (Pink) x 12, (White) x 5, (Baby Blue) x 8, (White) x 18
- Row 106 [WS]: (White) x 18, (Baby Blue) x 8, (White) x 5, (Pink) x 11, (White) x 5
- ← Row 107 [RS]: (White) x 5, (Pink) x 11, (White) x 4, (Baby Blue) x 9, (White) x 17
- Row 108 [WS]: (White) x 17, (Baby Blue) x 11, (Pink) x 13, (White) x 4
- ← Row 109 [RS]: (White) x 4, (Pink) x 13, (Baby Blue) x 10, (White) x 17
- Row 110 [WS]: (White) x 17, (Baby Blue) x 10, (Pink) x 12, (White) x 4
- ← Row 111 [RS]: (White) x 3, (Pink) x 12, (Baby Blue) x 10, (White) x 17
- Row 112 [WS]: (White) x 17, (Baby Blue) x 9, (Pink) x 12, (White) x 3
- ← Row 113 [RS]: (White) x 3, (Pink) x 11, (Baby Blue) x 8, (White) x 18



Baby Loss Ribbon - C2C Crochet Blanket Pattern - PrettyThingsByKatja

- Row 114 [WS]: (White) x 18, (Baby Blue) x 7, (Pink) x 11, (White) x 3
- ← Row 115 [RS]: (White) x 3, (Pink) x 10, (Baby Blue) x 7, (White) x 18
- Row 116 [WS]: (White) x 19, (Baby Blue) x 6, (Pink) x 9, (White) x 3
- ← Row 117 [RS]: (White) x 3, (Pink) x 9, (Baby Blue) x 5, (White) x 19
- Row 118 [WS]: (White) x 20, (Baby Blue) x 4, (Pink) x 8, (White) x 3
- ← Row 119 [RS]: (White) x 3, (Pink) x 7, (Baby Blue) x 4, (White) x 20
- Row 120 [WS]: (White) x 21, (Baby Blue) x 2, (Pink) x 7, (White) x 3
- ← Row 121 [RS]: (White) x 3, (Pink) x 6, (Baby Blue) x 2, (White) x 21
- Row 122 [WS]: (White) x 22, Baby Blue, (Pink) x 4, (White) x 4
- ← Row 123 [RS]: (White) x 5, (Pink) x 2, (White) x 23
- Row 124 [WS]: (White) x 29
- ← Row 125 [RS]: (White) x 28
- Row 126 [WS]: (White) x 27
- ← Row 127 [RS]: (White) x 26
- Row 128 [WS]: (White) x 25
- ← Row 129 [RS]: (White) x 24
- Row 130 [WS]: (White) x 23
- ← Row 131 [RS]: (White) x 22
- Row 132 [WS]: (White) x 21
- ← Row 133 [RS]: (White) x 20
- Row 134 [WS]: (White) x 19
- ← Row 135 [RS]: (White) x 18
- Row 136 [WS]: (White) x 17
- ← Row 137 [RS]: (White) x 16
- Row 138 [WS]: (White) x 15
- ← Row 139 [RS]: (White) x 14
- Row 140 [WS]: (White) x 13
- ← Row 141 [RS]: (White) x 12
- Row 142 [WS]: (White) x 11



Baby Loss Ribbon - C2C Crochet Blanket Pattern - PrettyThingsByKatja

- ← Row 143 [RS]: (White) x 10
- Row 144 [WS]: (White) x 9
- ← Row 145 [RS]: (White) x 8
- Row 146 [WS]: (White) x 7
- ← Row 147 [RS]: (White) x 6
- Row 148 [WS]: (White) x 5
- ← Row 149 [RS]: (White) x 4
- Row 150 [WS]: (White) x 3
- ← Row 151 [RS]: (White) x 2
- Row 152 [WS]: White

The Graph:

I have divided it into multiple pages so that each square is visible. For me, it is easier to do the C2C with written instructions, but if you like it better, you can do it by counting the squares on the graph. I prefer to look at the charts, just to see where I am and how much I still need to do.

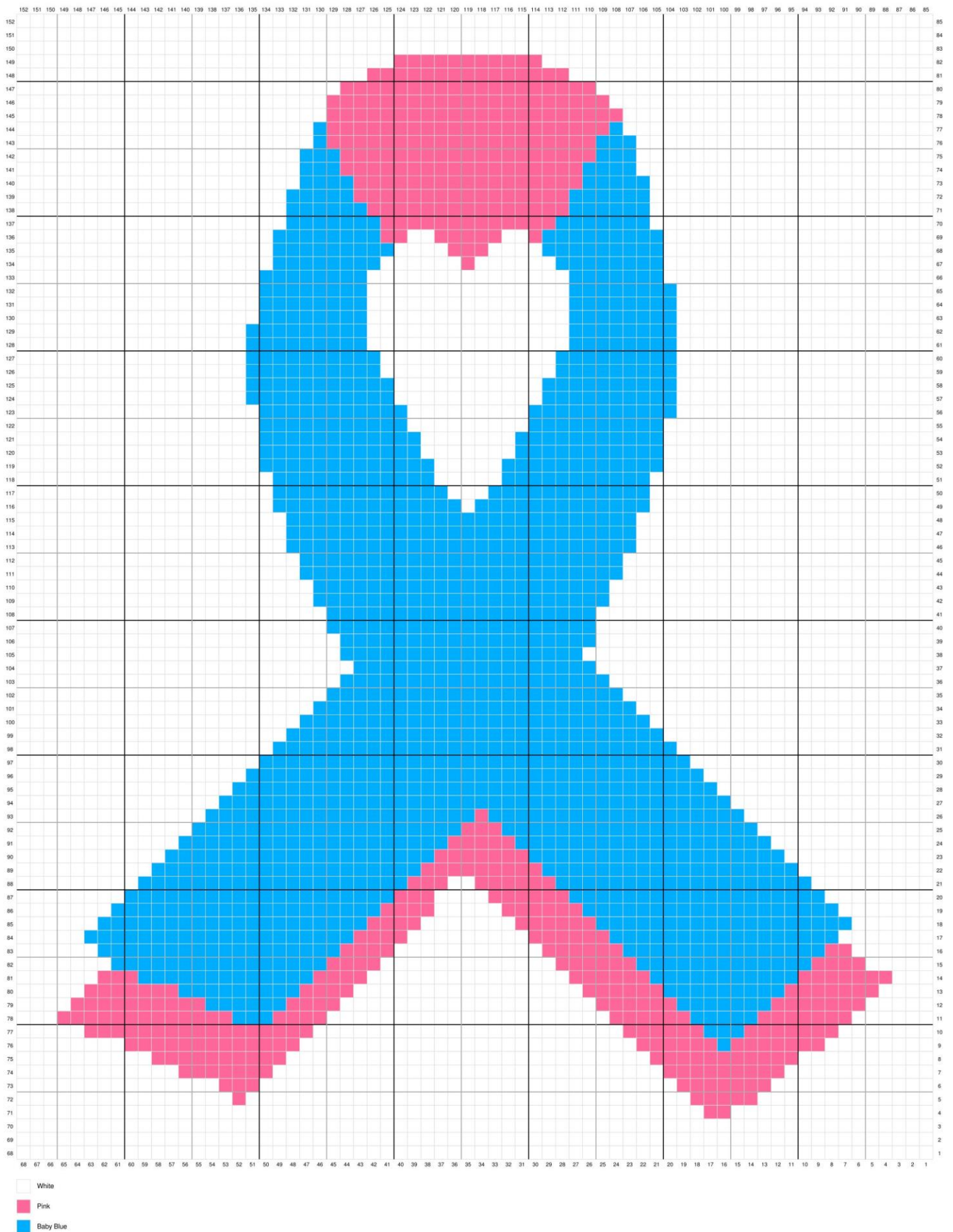
But be careful with assembling the graphs together.

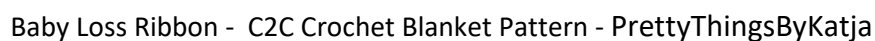
Assembling the Graph:

The graph for this pattern is broken up into multiple pages. You will need to cut out the graph and tape it together to form the full design, making sure to align the rows and columns. Leave the row and column numbers visible on the outer edges of the graph.



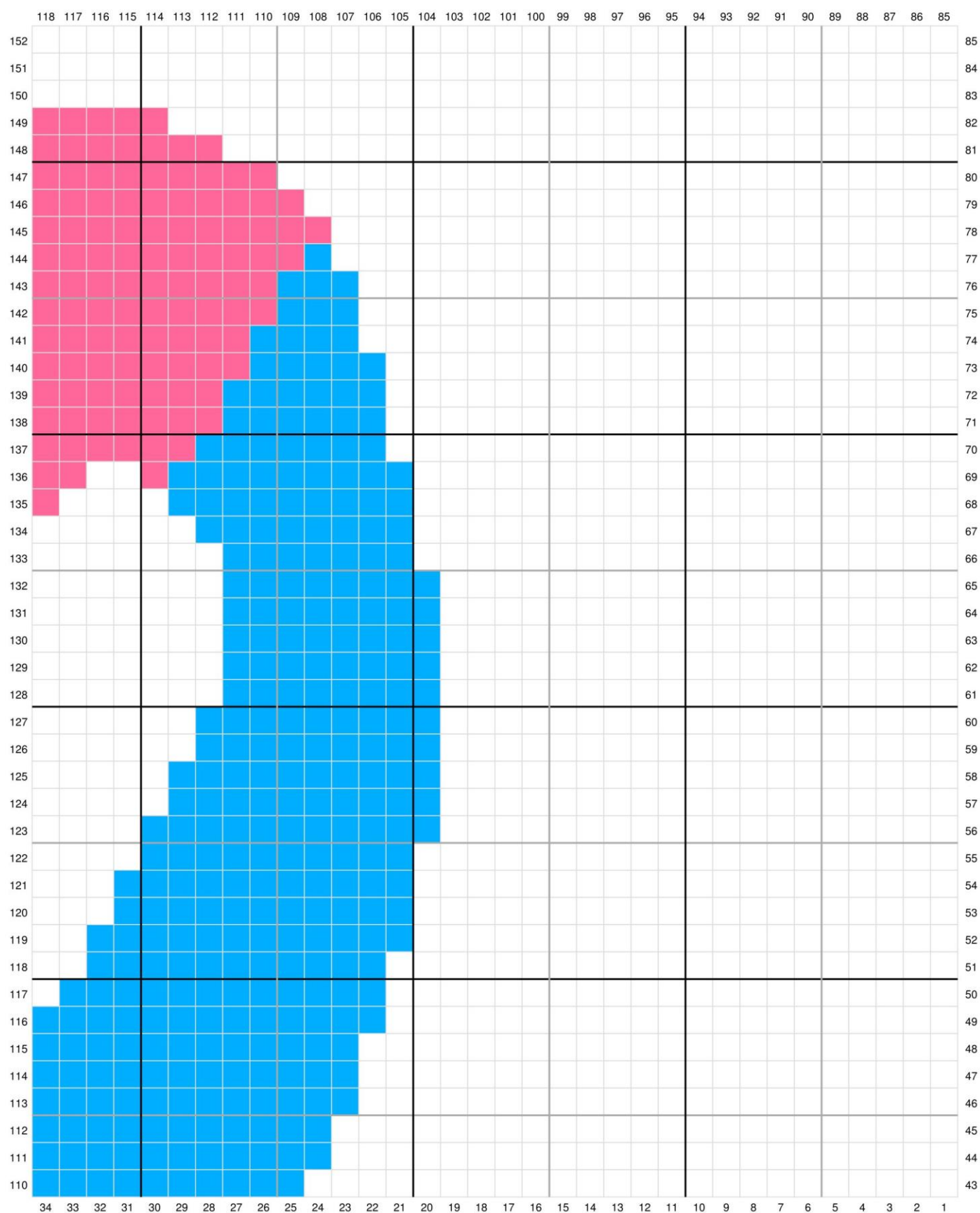
Baby Loss Ribbon - C2C Crochet Blanket Pattern - PrettyThingsByKatja







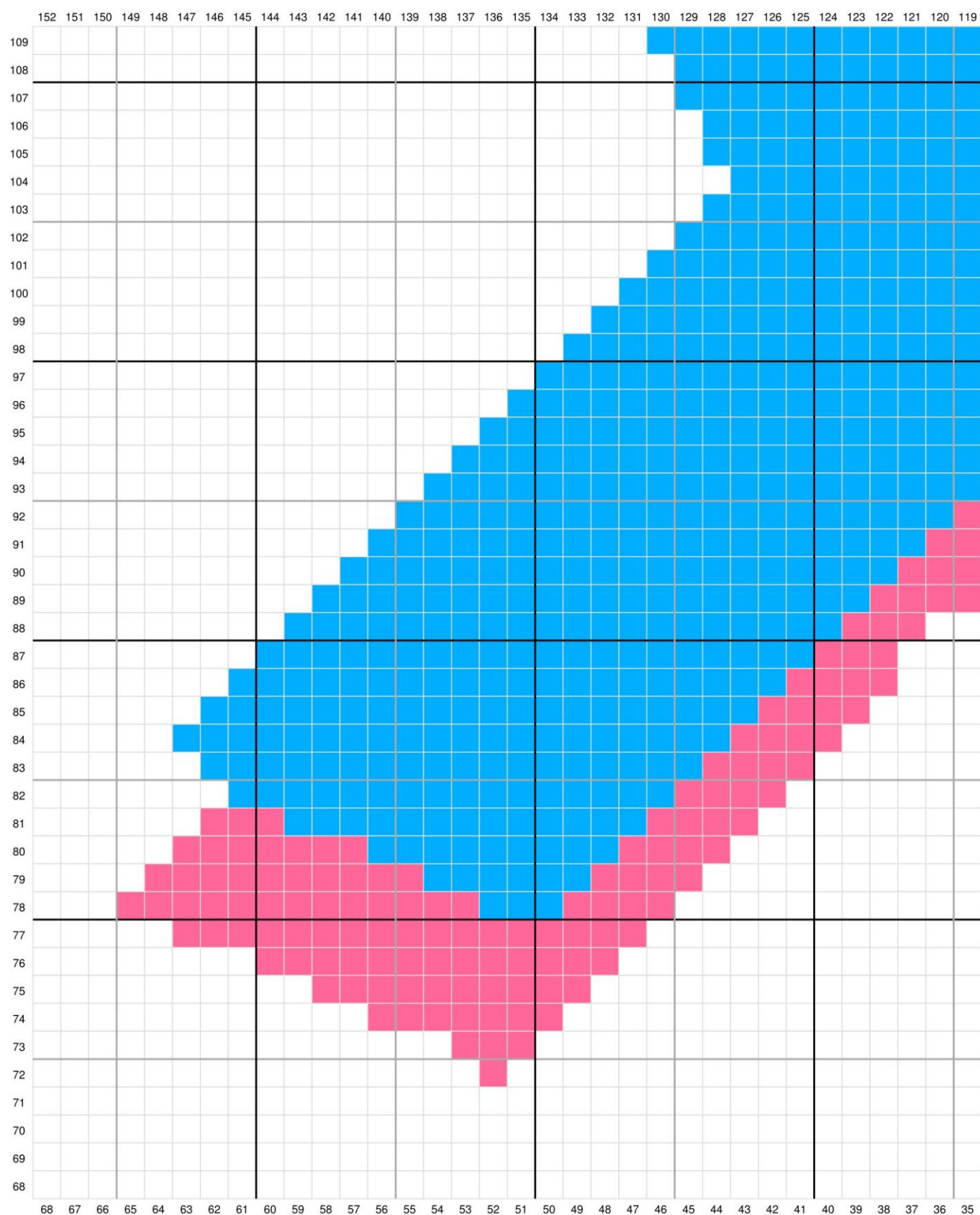
Baby Loss Ribbon - C2C Crochet Blanket Pattern - PrettyThingsByKatja



- ☐ White
- ☐ Pink
- ☐ Baby Blue



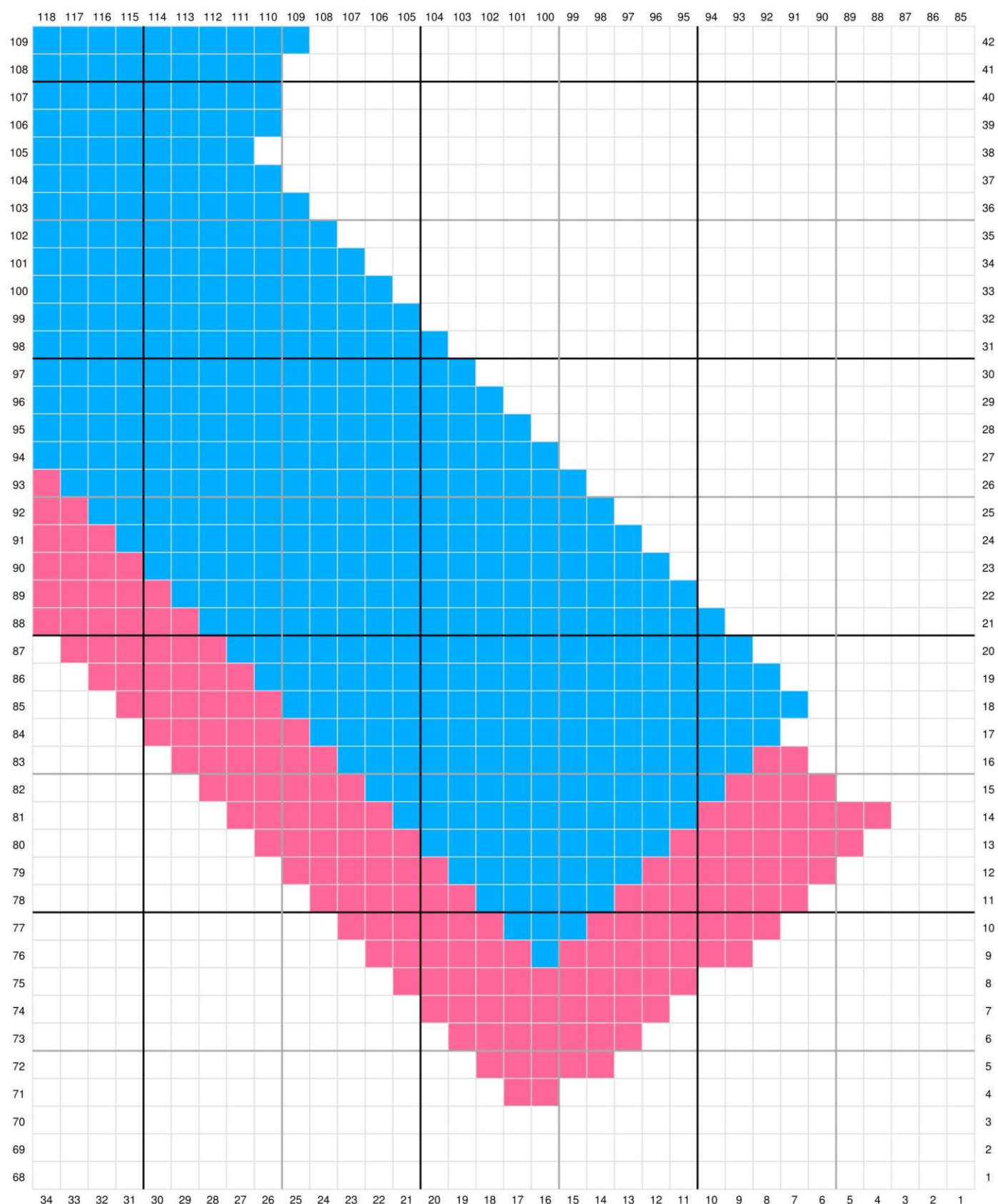
Baby Loss Ribbon - C2C Crochet Blanket Pattern - PrettyThingsByKatja



- White
- Pink
- Baby Blue



Baby Loss Ribbon - C2C Crochet Blanket Pattern - PrettyThingsByKatja



- White
- Pink
- Baby Blue



Baby Loss Ribbon - C2C Crochet Blanket Pattern - PrettyThingsByKatja

Congratulations, the hardest part is over!

Now all you have to do is make a border. It is not necessary, but it gives a pretty finished look.

I have made a Crab stitch around it. It is also called The reverse single crochet.

I always like to start and finish my patterns with one or two rows of the SC in the MC. When you complete the design, it is safe to cut the CC yarn. It will not get loose.

With the MC, you crochet one round of SC all the way around. At the sides, you put one SC in each row, and at the corners, you crochet three SC in the same stitch.

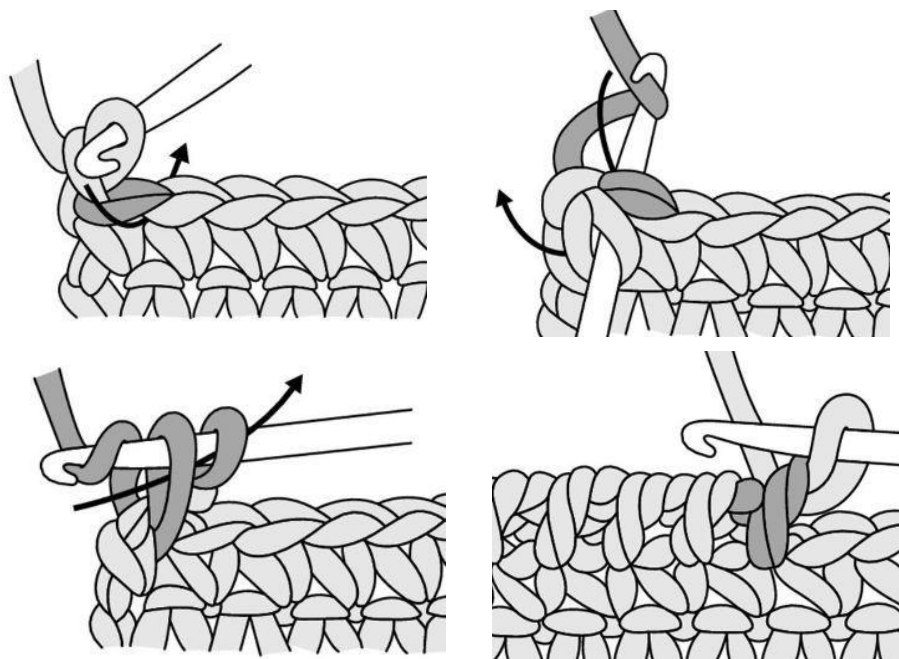
When you come all the way around you SL ST into the first SC, and FO. But only if you want to make the Crab stitch with different color.

The actual mechanics of a reverse single crochet stitch are the same as for a regular single crochet — except in reverse.

Instead of working from right to left, you work from Left to right. It creates a somewhat twisted, rounded edge that's good for making a simple finished edge for your work.

Be sure to have the right side of your work facing you.

- Insert the hook, from front to back, in the next stitch to the right. Yarn over (yo) and draw the yarn through the stitch. (This step is similar to how you work a regular single crochet — only backward.)
- Yarn over and pull the yarn through the two loops on the hook.



One reverse single crochet is complete.

Repeat the preceding steps in each stitch across the row.



Baby Loss Ribbon - C2C Crochet Blanket Pattern - PrettyThingsByKatja

To complete your crab stitch border, stop when you've reached the stitch you started in. Instead of adding a crab stitch in that starting stitch, slip stitch into the same stitch you started in.

Cut your yarn and pull through. When you weave in your ends, you'll want to weave the tail through the stitches to the right.

Congratulations you made it!

Thank you very much for using my pattern. I hope you enjoyed crocheting it as much as I enjoyed making it.

If you like my pattern, please, follow my blog – bestofcrochetpatterns.com, I will share free patterns and tips there.

You can also share your creation with me on Facebook and Instagram (Tag me into the photo @Pretty_things_by_katja). I would love to see it.

Have a beautiful day.

Katja